

Water Barrier™ F804

The F804 building entry seal is intended for sealing piping in drilled holes in concrete walls and floors. The F804 provides so-called movement friendly sealing which allows for axial movement of the pipe.

Water Barrier™ F804 building entry seal is intended for sealing piping in drilled holes in concrete walls and floors. This sealing variant does not require any concrete casting. The F804 provides so-called movement friendly sealing which allows for axial movement of the pipe. The seal is adjustable and can be mounted both inside or outside the concrete wall.

The F804 can be used with all sorts of piping, e.g. plastic, steel, concrete etc. and allows for generous axial movement of piping with a smooth surface.

The special profile of the rubber sealing ring creates an efficient seal between the pipe and the concrete. A cavity in the rubber ring is filled with grease in order to achieve a movement friendly seal. At the same time the grease prevents any water leaking through the seal where the piping may be scratched.

The pressure of the clamping ring causes the seal to expand while simultaneously causing the pressure against the wall and floor to increase forcing the grease out from the sealing groove.

Material

The sealing ring is made of SBR-rubber with a hardness of $40^{\circ} \pm 5^{\circ}$ IRHD. The material satisfies the demands in the Europé Norm EN 681-1.

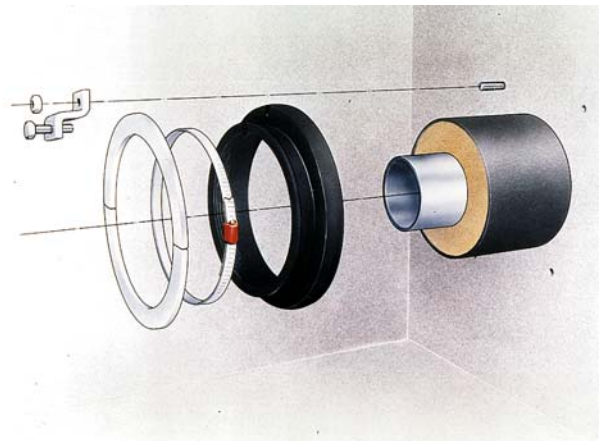
F804 seal have a very good durability against alkaline grow after embedment in concrete.

The hose clip is supplied as a standard component in aluzinc.

The maximum continuous working temperature for rubber material is $+ 45^{\circ}$ C. The seal can shortly be exposed to a temperature of $+ 95^{\circ}$ C.

Test Resultat

The seals in the F800-systems have successfully passed the function sealing test at Studsvik AB, Sweden and Fernwärme-ForschungsInstitut in Hannover, Germany.



” The F804 provides so-called movement friendly sealing which allows for axial movement of the pipe.”

Water Barrier™ F804

Mounting Instructions

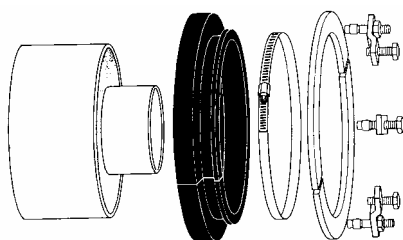
1. Bore a hole in the concrete wall (see recommended hole diameters below), carefully in order to avoid flaking. Carefully clean the area for approx. 50 mm around the drilled hole. The concrete should be smooth and even and the hole should be free of rough edges. The pipe should also be clean where the seal is to be fitted.

Recommended diameter for the bored holes:
Outer diameter of pipe + 10 mm.

Maximum diameter for bored holes:
Outer diameter of pipe + 20 mm.

2. Fit the rubber ring onto the pipe and then insert the pipe into the wall. Turn the ring inside out (does not apply to diameters 110 - 160 mm where the ring must be filled with grease before fitting onto the pipe) and fill the grease groove with the grease supplied. Then fill the sealing groove with the sealing compound provided. The rest of the sealing compound can be used to fill the space between the pipe and the concrete wall. Turn the ring back to its original position.

3. Centre the pipe in the bored hole. Press the rubber ring against the concrete wall and fit the hose clip. Slightly tighten the hose clip so that the rubber ring comes into contact with the pipe.



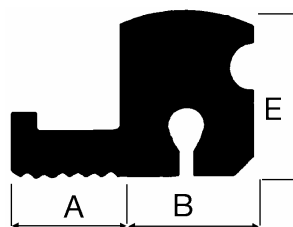
Bore holes in wall for the clamping dogs expanding bolts. Use a clamping dog as a jig. Position the end clamping dogs max. 50 mm from the end of the clamping rings. Position the remaining clamping dogs evenly around the pipe.

4. Mount the clamping rings and clamping dogs. Adjust, if necessary, the clamping ring so that it has good contact with the rubber ring. Press the clamping ring behind the screw holder of the hose clip. Tighten the clamping dogs so that the seal is pressed against the wall making the unit watertight. Adjust and tighten the hose clip. Make further adjustments of the clamping dogs and hose clips if necessary.

The number of clamping dogs required for the pipes:

110 - 355 mm	6 units
400 - 630 mm	8 units
710 - 1000 mm	10 units

Detailed mounting instructions can be provided on request.



PIPE O.D. mm	A	B	E
110 – 180	26	25	37
200 – 1000	26	31	37

DIMENSIONER DY I MM / ART NR

PIPE DY	ART NO	PIPE DY	ART NO	PIPE DY	ART NO	PIPE DY	ART NO
110	4659240	200	4826502	355	4827002	630	4827506
125	4659345	225	4826600	400	4827100	710	4827604
140	4659443	250	4826705	450	4827205	800	4827702
160	4659541	280	4827303	500	4827303	900	4827800
180	4672043	315	4827401	560	4827401	1000	4827905

wideco sweden

POSTAL ADDRESS
Wideco Sweden AB
Företagsgatan 7
504 94 Borås

CONTACT
Tel. 033 – 10 18 10
Fax. 033 – 10 73 10
Email: info@wideco.se