

# Radona™ R802

Special seal which prevents radon to penetrate where pipes are embedded in concrete walls and floors.

**Radona™ is used for preventing radon leakage into houses where pipes are embedded in concrete walls and floors. The seal can be used with all sorts of piping, such as plastic, steel, cast iron etc. and is fitted onto the pipe for complete embedment. The seal can also be used with all sorts of floor drains.**

The unique profile of the ring, together with the hose clip provides an effective seal between the pipe and concrete. This effective sealing is partly due to the ability of the hose clip to hold the rubber ring in close contact to the pipe during concreting process. The flanges of the ring are effectively fastened in the concrete during the setting process.

R802 seal can be advantageously used where a pipe is not subjected to great axial movement.

## Material

The sealing ring is made of SBR-rubber with a hardness of  $40^{\circ} \pm 5^{\circ}$  IRHD. The material satisfies the demands in the Europé Norm EN 681-1. R802 seal have a very good durability against alkaline grow after embedment in concrete. The hose clip is supplied as a standard component in aluzinc. The maximum continuous working temperature for rubber material is  $+ 45^{\circ}$  C. The seal can shortly be exposed to a temperature of  $+ 95^{\circ}$  C.

## Test results

The seals have successfully passed the function sealing test at Fernwärme ForschungsInstitut in Hannover, Germany and at Swedish National Testing and Research Institute.

Swedish National Testing and Research Institute also approved the ability of the R802 to prevent radon leakage. Test reports can be provided on request.

## What is radon

Radon is a gaseous radioactive element. It is derived from the radioactive decay from radium, which in turn comes from the radioactive decay of uranium which is found in small quantities in all soils and rocks.

Radon is a cancer-causing radioactive gas. When radon decays it forms tiny radioactive particles which may be breathed into the lungs. Radiation from these particles can cause lung cancer.

Radon is a toxic, colourless gas and it can be condensed to a transparent liquid and to an opaque, glowing solid. Radon is colourless and you can not smell or taste it. The only way to detect radon is to measure.

The floors and walls of dwellings contain many small cracks and gaps, for example from pipe embedment. Radon from the ground is drawn into the building through these cracks and gaps because the atmospheric pressure inside the building is usually slightly lower than the pressure in the underlying soil.



*"The unique profile of the ring, together with the hose clip provides an effective seal between the pipe and concrete"*

# Radona R802

Radon seal R802 embedment ring is normally a little less in diameter than the pipe in question (2 - 8% depending on the pipe diameter). If the seal needs to be pushed along the pipe a greasing agent can be used or the ring can be "rolled" along the pipe. We can supply the greasing agents.

If a hole is bored in a concrete wall in preparation for embedment of a pipe/sealing ring we recommend the following minimum bore holes:

Pipe dimension	Hole dimension
50 – 180	Pipe dim. + 75 mm
≥ 200	Pipe dim. + 110 mm

When fitting in other types of hole (e.g. rectangular) there should be free movement around the ring of:

Approx 15 mm	Pipe dim. 50-180 mm
Approx 25 mm	Pipe dim. 200 mm

## Mounting Instructions

1. Fit the sealing ring and the hose clip onto the pipe.
2. Tighten the hose clip so that the ring cannot be moved axially or radially on the pipe.

*The effective sealing quality of the R802 is partly due to the ability of the hose clip to hold the ring close to the pipe during the concreting process.*

3. Ensure that the ring is completely covered by concrete. This applies especially where a pipe is angled in a concrete floor, e.g. radon sealing of drains. In such cases it would be better to fit the ring onto the drain itself.

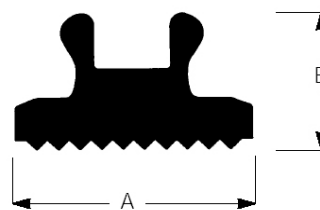
4. Vibrate the concrete so that there is good contact on the rubber ring.

Contact us for alternative mounting suggestions.

## DIMENSIONS DY IN MM / ART NO. / RSK NO.

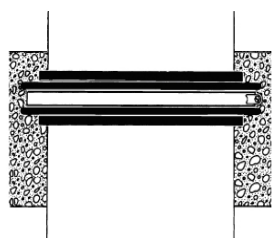
PIPE DY	ART NO	RSK NO	PIPE DY	ART NO	RSK NO
50	3330050	4054769	225	3330225	4054760
63	3330063	4054751	250	3330250	4054761
75	3330075	4054752	280	3330280	4054762
90	3330090	4054753	315	3330315	4054763
110	3330110	4054754	355	3330355	4054764
125	3330125	4054755	400	3330400	4054765
140	3330140	4054756	450	3330450	4054766
160	3330160	4054757	500	3330500	4054767
175	3330175	4054771			
180	3330180	4054758			
200	3330200	4054759			

We can also supply special sealing rings in the dimension you require.

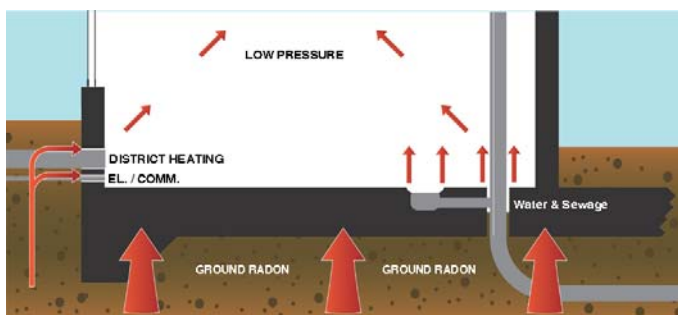


Dimension	A	B
50-180	40	22
200-1000	50	27

All measurements in mm



Radona embedded in concrete.  
Radona should be mounted in the concrete floor with at least 30 mm covered.



Observe that it is not only pipes through the bottom plate that should be sealed but also pipes through walls under ground.

wideco sweden

POSTAL ADDRESS  
Wideco Sweden AB  
Företagsgatan 7  
504 94 Borås

CONTACT  
Tel. 033 – 10 18 10  
Fax. 033 – 10 73 10  
Email: info@wideco.se