

# Water Barrier™ *summary*

Special sealings which prevent water and radon to penetrate where pipes are embedded in concrete walls and floors.

The seals are designed to function trouble-free at both high and low water pressure.

**Water Barrier™ F800/900 system covers several different sealing variants which are intended for water seals in pipelines at the point of entry in concrete walls and floors. Several of the seals allow for axial movement combined with high external water pressure.**

**The carefully developed profile of the seal ensures optimal sealing and has been thoroughly tested at both the Swedish National Testing and Research Institute and other international testing centres.**

## F800



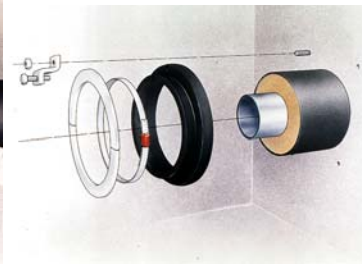
**F801**



**F802**



**F803**



**F804**

### **F801 Building entry seal**

Building Entry Seal F801 is our standard seal and is intended for sealing piping at the embedments in concrete walls and floors. The seals are designed to function trouble-free at both high and low water pressure. F801 is also a so-called movement friendly seal which allows for axial movement at the point of embedment. Building entry seal is radon approved.

### **F802 Embedment sealing ring**

Embedment sealing ring F802 is used at embedments of piping in concrete walls and floors. The unique profile of the rubber ring combined with its hose clip offers efficient sealing between the piping and concrete. Embedment ring F802 carries the RSK number and is radon approved.

### **F803 Repair seal**

Repair seal is for use as a seal at new installations and renovations of embedments where leakage has occurred between the piping and concrete. F803 seal can be mounted either on the inside or outside of a wall. The seal is completely split when mounting.

### **F804 Building entry seal for bored holes**

The building entry seal F804 is intended for sealing piping in bored holes in concrete walls. This sealing variant does not need any concrete casting afterwards. Building entry seal F804 can be used advantageously where the pipe is subjected to both axial, and to a certain extent radial movement exists.

## Water Barrier™ summary

### F900



F910 Chamber Connection Pipe



F911 Combination seal

### F910 Chamber Connection Pipe

The F910 is a rubber seal which provides a flexible connection for all types of round piping in drains. The seal is pressed into the bored hole. The end of the pipe is chamfered and greased before pushing into the seal. F910 is both reliable and labour saving.

### F911 Combination seal

When a drain needs an extra connection of a pipe the combination seal F911 provides a flexible solution. The seal can be adapted to suit three different pipe dimensions. This means that with a limited number of pipe sizes and boring tools it is possible to connect various sizes of piping.

*”Several of the seals allow axial movement combined with high external water pressure.”*

**wideco**sweden

POSTADDRESS  
Wideco Sweden AB  
Företagsgatan 7  
504 94 Borås

KONTAKT  
Tel. 033 – 10 18 10  
Fax. 033 – 10 73 10  
Email: info@wideco.se